

GUHRING



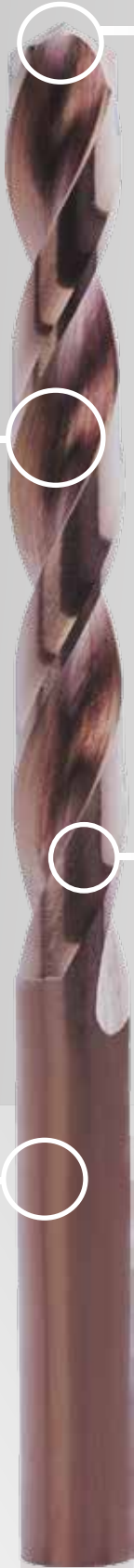
- 8% cobalt-alloyed HSCO steel for maximum performance at high temperatures
- 135° split point for spot-on accuracy pilot drilling with minimum feed forces
- Suitable for machines or hand drills for general use or, for example, in the aviation industry



AeroX HSCO8-split point drill

GUHRING - YOUR WORLD-WIDE PARTNER

AeroX HSCO8-split point drill



135° split point

Improved 135° split point for accurate pilot drilling without punching or centering:

- minimal feed forces
- reduced radial forces
- small hole tolerances

Flutes

Specially formed flute for reliable chip formation and evacuation

Optimised web

Heavily reduced tapered web for additional tool rigidity with simultaneously minimal forces



Surface finish

Bronze oxide surface finish with improved ground surface for rapid chip evacuation

Tool material

8% cobalt-alloyed high speed steel for improved tool life and high thermal resistance enables working in difficult-to-machine materials or at high temperatures



- Standard range
- Ø 1.00 – 13.00 mm
- 2 drill sets in the most common dimensions

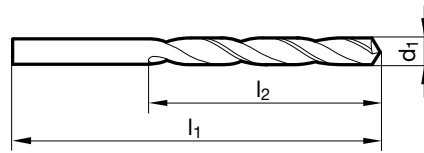


AeroX split point drills



- P** • Web thinning $\geq \varnothing 1.000$ • optimised split point • 8% cobalt-alloyed HSCO high speed steel for maximum tool life, high thermal resistance and hardness
- M** •
- K** •
- N** • Unalloyed and high-alloyed steel materials • cast iron and non-ferrous materials • titanium • titanium-alloys
- S** •
- H** ○

Tool material	M42
Surface finish	
Cutting direction	
Discount group	138



Guhring no. **1018**

d1	d1	l1	l2	Availability	d1	d1	l1	l2	Availability
mm	inch	mm	mm		mm	inch	mm	mm	
1.00		34.00	12.00	●	3.90		75.00	43.00	●
1.10		36.00	14.00	●	3.97	5/32	75.00	43.00	●
1.20		38.00	16.00	●	4.00		75.00	43.00	●
1.30		38.00	16.00	●	4.10		75.00	43.00	●
1.40		40.00	18.00	●	4.20		75.00	43.00	●
1.50		40.00	18.00	●	4.30		80.00	47.00	●
1.59	1/16	43.00	20.00	●	4.40		80.00	47.00	●
1.60		43.00	20.00	●	4.50		80.00	47.00	●
1.70		43.00	20.00	●	4.60		80.00	47.00	●
1.80		46.00	22.00	●	4.70		80.00	47.00	●
1.90		46.00	22.00	●	4.76	3/16	86.00	52.00	●
1.98	5/64	49.00	24.00	●	4.80		86.00	52.00	●
2.00		49.00	24.00	●	4.90		86.00	52.00	●
2.10		49.00	24.00	●	5.00		86.00	52.00	●
2.20		53.00	27.00	●	5.10		86.00	52.00	●
2.30		53.00	27.00	●	5.16	13/64	86.00	52.00	●
2.38	3/32	57.00	30.00	●	5.20		86.00	52.00	●
2.40		57.00	30.00	●	5.30		86.00	52.00	●
2.50		57.00	30.00	●	5.40		93.00	57.00	●
2.60		57.00	30.00	●	5.50		93.00	57.00	●
2.70		61.00	33.00	●	5.56	7/32	93.00	57.00	●
2.78	7/64	61.00	33.00	●	5.60		93.00	57.00	●
2.80		61.00	33.00	●	5.70		93.00	57.00	●
2.90		61.00	33.00	●	5.80		93.00	57.00	●
3.00		61.00	33.00	●	5.90		93.00	57.00	●
3.10		65.00	36.00	●	5.95	15/64	93.00	57.00	●
3.17	1/8	65.00	36.00	●	6.00		93.00	57.00	●
3.20		65.00	36.00	●	6.10		101.00	63.00	●
3.25		65.00	36.00	●	6.20		101.00	63.00	●
3.30		65.00	36.00	●	6.30		101.00	63.00	●
3.40		70.00	39.00	●	6.35	1/4	101.00	63.00	●
3.50		70.00	39.00	●	6.40		101.00	63.00	●
3.57	9/64	70.00	39.00	●	6.50		101.00	63.00	●
3.60		70.00	39.00	●	6.60		101.00	63.00	●
3.70		70.00	39.00	●	6.70		101.00	63.00	●
3.80		75.00	43.00	●	6.80		109.00	69.00	●



d1	d1	l1	l2	Availability	d1	d1	l1	l2	Availability
mm	inch	mm	mm		mm	inch	mm	mm	
6.90		109.00	69.00	●	9.30		125.00	81.00	●
7.00		109.00	69.00	●	9.50		125.00	81.00	●
7.10		109.00	69.00	●	9.52	3/8	133.00	87.00	●
7.14	9/32	109.00	69.00	●	9.60		133.00	87.00	●
7.20		109.00	69.00	●	9.70		133.00	87.00	●
7.30		109.00	69.00	●	9.80		133.00	87.00	●
7.40		109.00	69.00	●	9.90		133.00	87.00	●
7.50		109.00	69.00	●	9.92	25/64	133.00	87.00	●
7.54	19/64	117.00	75.00	●	10.00		133.00	87.00	●
7.60		117.00	75.00	●	10.10		133.00	87.00	●
7.70		117.00	75.00	●	10.20		133.00	87.00	●
7.80		117.00	75.00	●	10.30		133.00	87.00	●
7.90		117.00	75.00	●	10.32	13/32	133.00	87.00	●
7.94	5/16	117.00	75.00	●	10.50		133.00	87.00	●
8.00		117.00	75.00	●	10.72	27/64	142.00	94.00	●
8.10		117.00	75.00	●	10.80		142.00	94.00	●
8.20		117.00	75.00	●	11.00		142.00	94.00	●
8.30		117.00	75.00	●	11.11	7/16	142.00	94.00	●
8.33	21/64	117.00	75.00	●	11.50		142.00	94.00	●
8.40		117.00	75.00	●	11.51	29/64	142.00	94.00	●
8.50		117.00	75.00	●	11.91	15/32	151.00	101.00	●
8.60		125.00	81.00	●	12.00		151.00	101.00	●
8.70		125.00	81.00	●	12.20		151.00	101.00	●
8.73	11/32	125.00	81.00	●	12.30	31/64	151.00	101.00	●
8.80		125.00	81.00	●	12.50		151.00	101.00	●
8.90		125.00	81.00	●	12.70	1/2	151.00	101.00	●
9.00		125.00	81.00	●	12.80		151.00	101.00	●
9.10		125.00	81.00	●	13.00		151.00	101.00	●
9.13	23/64	125.00	81.00	●					
9.20		125.00	81.00	●					

AeroX split point drill sets



- P** ● Web thinning $\geq \varnothing 1.000$ ● optimised split point ● 8% cobalt-alloyed HSCO high speed steel ● sets are available in the most common dimensions for technicians and mechanics ● alternative set combinations are available on request
- M** ●
- K** ●
- N** ● Unalloyed and high-alloyed steel materials ● cast iron and non-ferrous materials ● titanium ● titanium-alloys
- S** ●
- H** ○

Tool material	M42
Surface finish	●
Cutting direction	
Discount group	138



Gühring no. **1083**

d1	In increments of	Tools per set	Code no.	Availability
mm	mm			
1.0-13.0	0.5	25	0.014	●
1.0-10.0	0.5	19	0.013	●